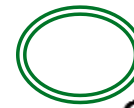




**Six Slides to Help New
Governors Improve Health**

Health is determined by life conditions

DETERMINANTS OF HEALTH



Genes and
Biology
10%

Physical
Environment
10%

Clinical Care
10%

Health Behaviors
30%

Social and
Economic Factors
40%

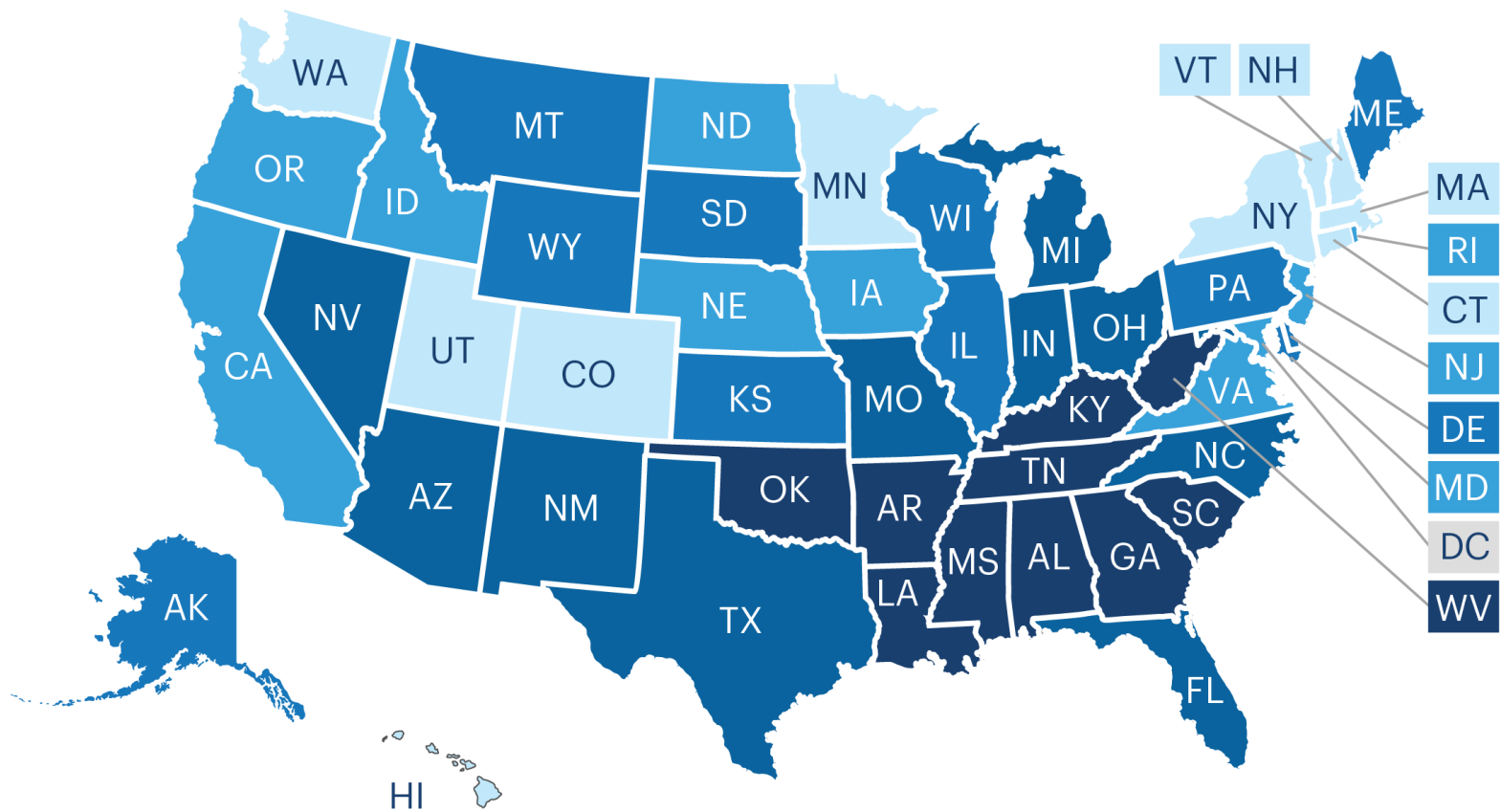
**The majority of
health care
spending ignores
these major cost
drivers.**

Determinants of Health Model based on frameworks developed by: Tarlov AR. *Ann N Y Acad Sci* 1999; 896: 281-93; and Kindig D, Asada Y, Booske B. *JAMA* 2008; 299(17): 2081-2083.

Some states are healthier than others:

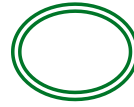
2017 America's Health Rankings Annual Report

Healthiest states:
CT, HI, MA, UT, VT,

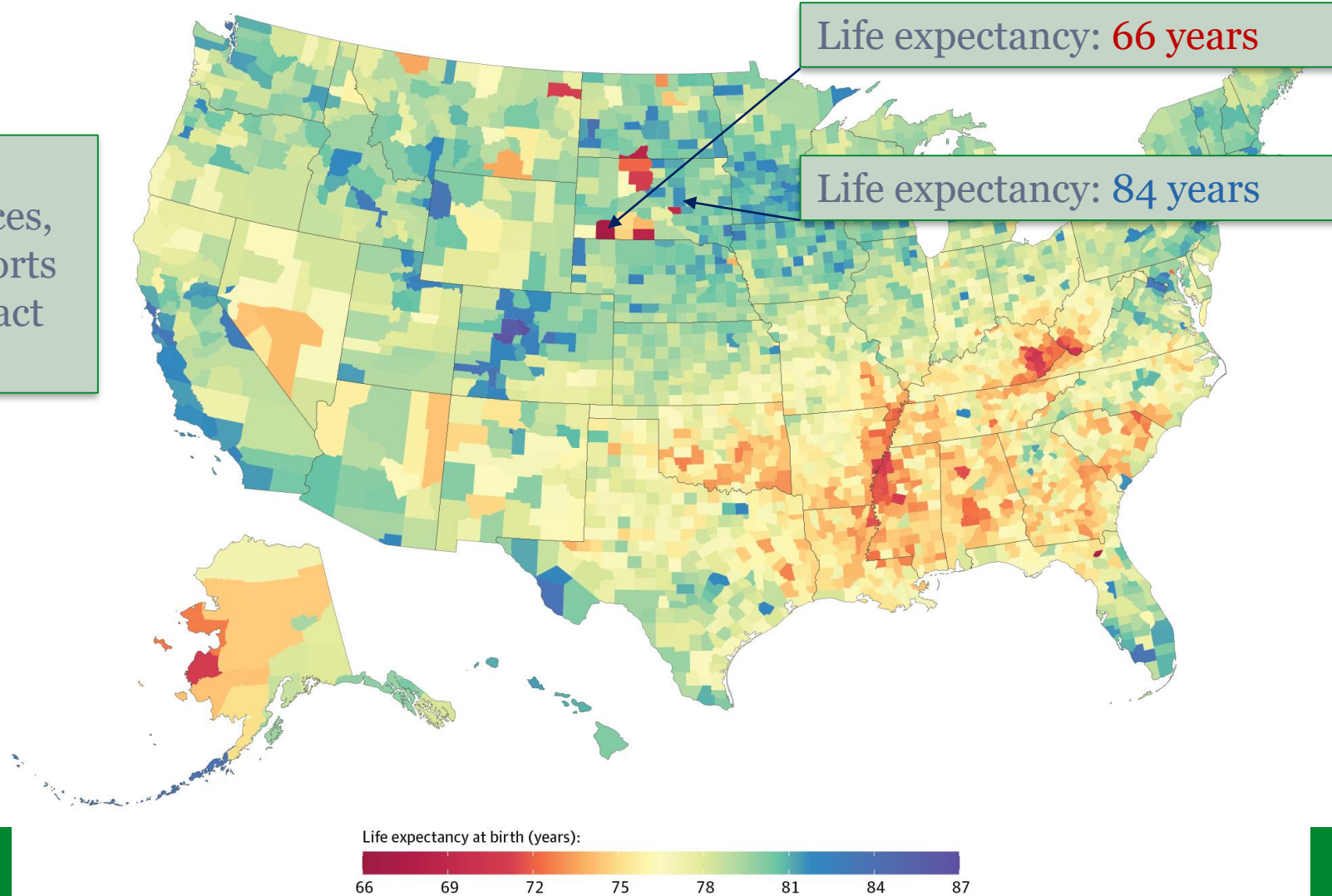


RANK: 1 to 10 11 to 20 21 to 30 31 to 40 41 to 50 Not Ranked

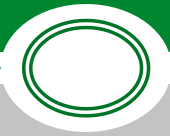
Life expectancy by county in 2014



Location and the opportunities, resources, and community supports that come with it impact health and longevity.



<https://jamanetwork.com/journals/jamainternalmedicine/fullarticle/2626194>



Multiple state agencies have responsibility for residents' health.

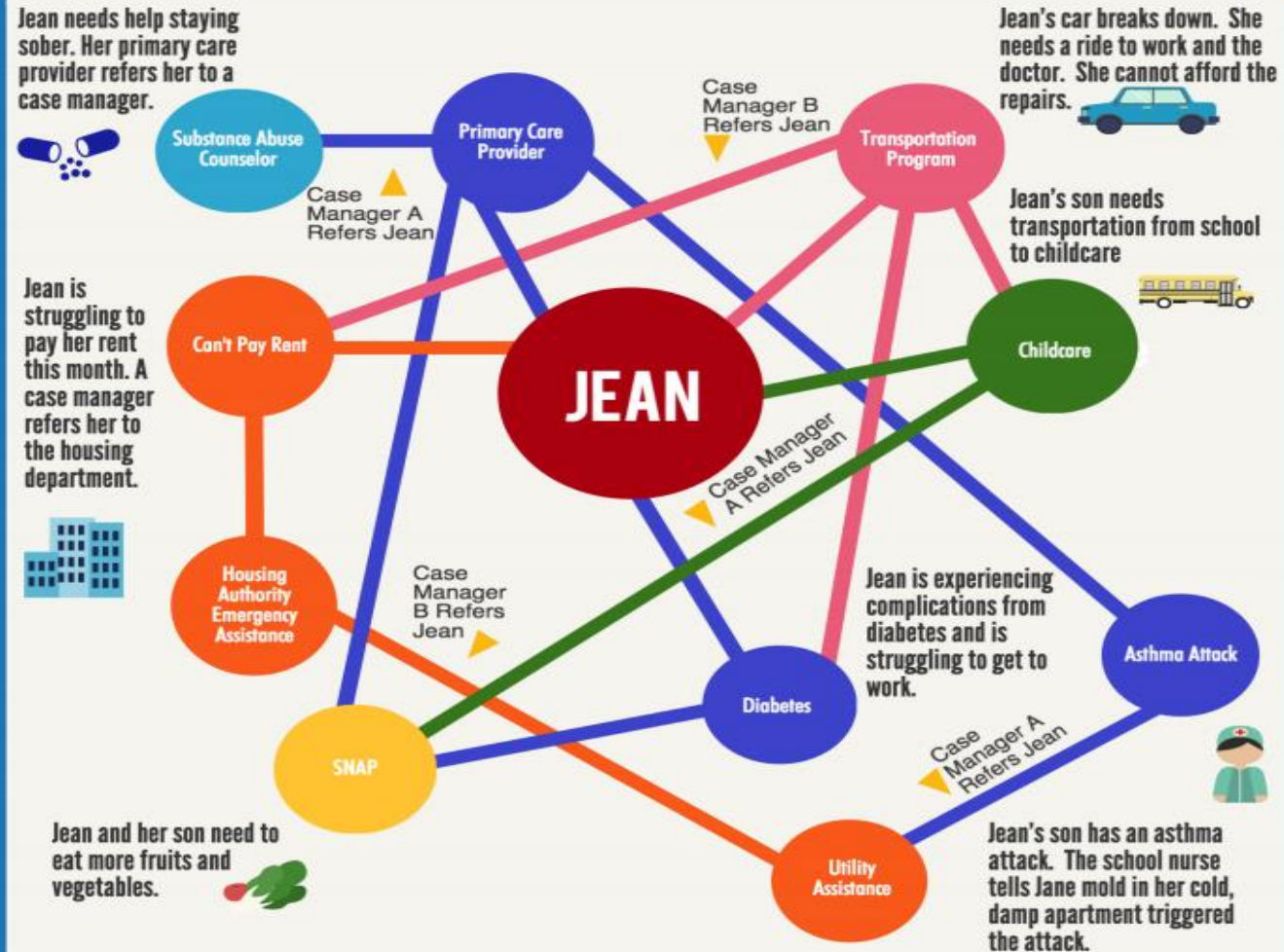
Hiring collaborative leaders who break down agency siloes can advance a governor's priorities.




MEET JEAN.

Jean is a 35-year-old single mother who works part-time at a minimum wage job. She has numerous medical conditions including diabetes and a history of depression and substance abuse. Jean's four-year-old son has asthma. She struggles to pay for food, housing, medical, and transportation costs. Jean relies on a number of state programs to help manage her diabetes and her son's asthma. She relies on different programs to assist with nutrition, housing and other needs. While it may appear her needs are adequately met through these various funding sources, Jean often feels like a ping pong ball bouncing from agency to agency in a complex, uncoordinated system of referrals.

HOW WILL JEAN GET ALL THE SERVICES SHE NEEDS?





**Key questions
to maximize
resources and
build
collaborative
teams:**

- **Which agencies** currently oversee health-related policies or programs, either directly or upstream (e.g., education and housing)?
 - Can spending or administration be better **aligned** across these agencies? Are there **gaps** in services?
- What type of **teams** and **leadership** can help your administration align health priorities across state government? What **qualifications** and **experience** are needed?
- What sort of office, cabinet, or **organizational structure** will help **align health-related work** across state government?