



Healthier Washington: Foundational Community Supports (FCS)

Laura Kate Zaichkin,
Acting Chief Policy Officer
Washington State Health Care Authority



1

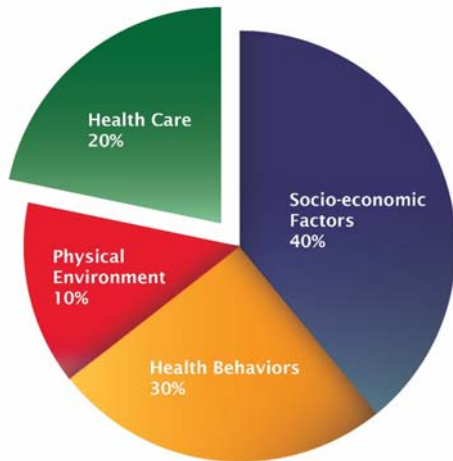


Healthier Washington



2

A new health system through collaboration



Because we know that health is more than health care.

Adapted from: Magnus et al. (2010). *Achieving Accountability for Health and Health Care: A White Paper*, State Quality Improvement Institute., Minnesota.



Medicaid Transformation Demonstration

- Up to \$1.5 billion for a five-year, statewide effort to show that Washington can deliver better health care for more people, while spending dollars in a smarter way for Apple Health (Medicaid) beneficiaries.
- Three initiatives:

Transformation through Accountable Communities of Health
Up to \$1.1B

Initiative 1

Long-term Services and Supports
\$175M

Initiative 2

Foundational Community Support Services
\$200M

Initiative 3



Supported employment services

Individual Placement and Support (IPS) model

Principles of supported employment

- Open to anyone who wants to work
- Focus on competitive employment
- Systematic job development
- Prioritize rapid job search
- Client preferences guide decisions
- Individualized long-term supports
- Integrated with treatment
- Benefits counseling included

Services may include

- Employment assessment and development of a plan to address barriers
- Assistance with applications, community resources and outreach to employers
- Education, training, coaching to maintain employment



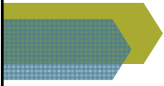
5

Supported employment eligibility criteria

- Health Needs (medical necessity)
- Risk Factors:
 - Those eligible for HEN/ABD (unable to work for 90+ days due to incapacity)
 - Behavioral health conditions, including
 - Serious mental illness
 - Multiple inpatient SUD treatments
 - Youth in transition (16+)
 - LTSS recipients unable to be employed due to conditions related to age, physical disability or TBI.



6



Supportive housing services

Community Support Services

Housing assessment and development of a plan to address barriers

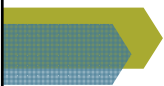
Assistance with applications, community resources, and outreach to landlords

Education, training, coaching, resolving disputes, and advocacy

*Supportive housing services **do not** include funds for room and board or the development of housing.*



7

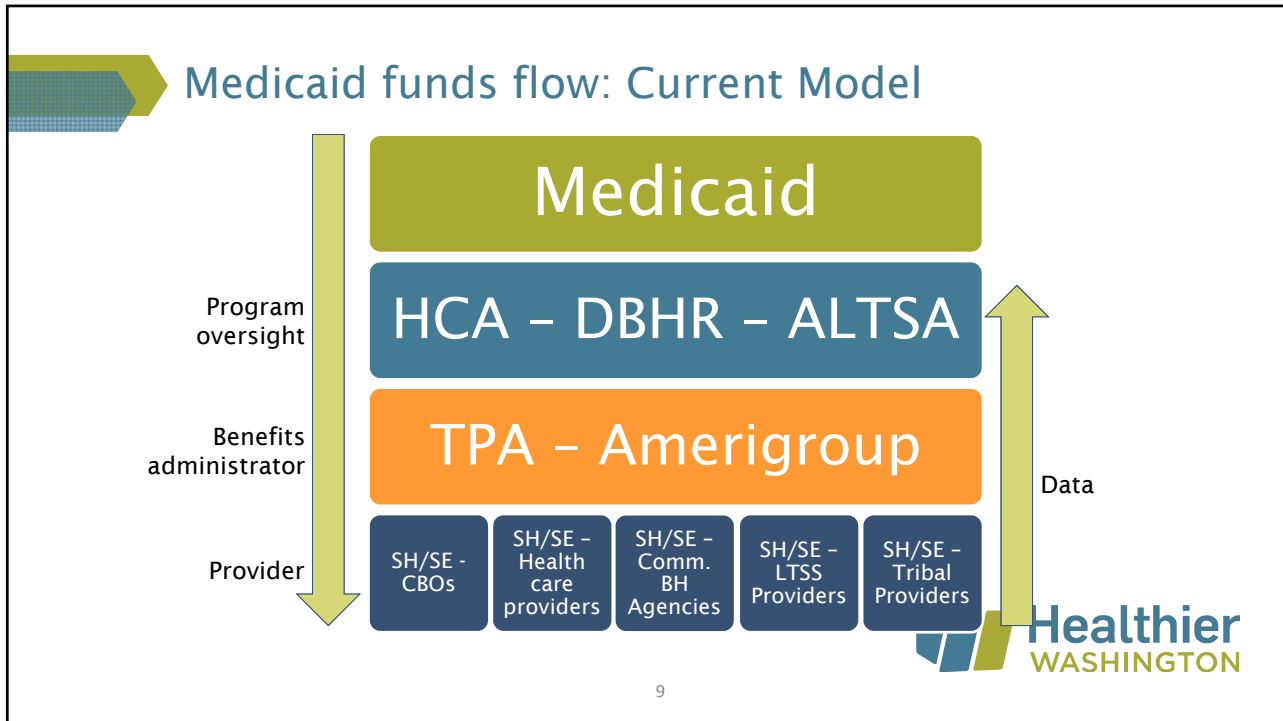


Supportive housing eligibility criteria

- Health needs (medical necessity)
- Risk factors
 - Chronically homeless (HUD definition)
 - Frequent/lengthy institutional contact
 - Frequent adult residential care stays
 - Frequent turnover of in-home caregivers
 - PRISM Score 1.5+



8



- ### Third Party Administrator
- Contracted with the state
 - Provides administrative oversight of benefit programs
 - Provider network development and maintenance
 - Service authorization
 - Distribution of reimbursement payments
 - Data/encounter tracking
- Healthier WASHINGTON
- 10

Next steps

Foundational Community Supports protocol

- Protocol must be approved before services can be provided

Third party administrator

- Amerigroup announced as apparently successful bidder 6/8

WAC

- HCA: Program authorization – Emergency WAC Revisions in process
- DBHR: Certification WAC – Emergency WAC finalized

Initial provision of services to begin after protocol approval

- Benefits will be provided statewide



11



Join the Healthier
Washington Feedback
Network. Sign up at:
hca.wa.gov/hw

Send questions to:
medicaidtransformation@hca.wa.gov



12